

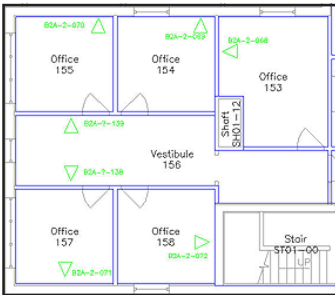
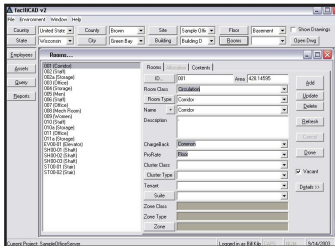
Affordable, Intuitive
Facility Management and
Space Planning Software



faciliCAD is a user-friendly graphical facility management system that is cost-effective to implement and easy to use. *faciliCAD* uses AutoCAD® as its base, harnessing AutoCAD's power with FM-specific features. By easily linking graphical objects to database records, *faciliCAD* transforms typical CAD drawings into intelligent resources, extending their value beyond the design phase throughout the life of the building.

faciliCAD is the perfect FM solution for property managers, physical plant engineers, resident architects, and others who need to accurately account for people, space, furniture, equipment, and assets. With the ability to provide both graphical and non-graphical reports, *faciliCAD* brings clarity to any organization's facility management requirements.





faciliCAD Overview

faciliCAD is a CAFM (Computer Aided Facility Management) software solution that is affordable and user-friendly. faciliCAD is a CAD/Database application based on AutoCAD™ (Autodesk Architectural Desktop™ and Autodesk Map™ may also be used) and Microsoft SQL Server.

faciliCAD Features

- One of the key features of faciliCAD is its dual user interface -- a database application, the Data Manager, which allows text information to be efficiently entered and managed and a CAD application, the CAD Manager, which provides graphical tools for data entry and manipulation. Any data entered from the Data Manager can also be entered and viewed from the CAD Manager.
- Use the CAD Manager to link objects in the AutoCAD drawing to records in the database. When linking the space boundary in the CAD Manager, the area value is automatically entered in the database. This is essential for the management of the actual space
- Space can be tracked and reported both graphically and non-graphically for space management and ChargeBack requirements. Thematic Graphic reports can be displayed in the AutoCAD drawing using the supplied predefined queries. Custom Query Thematic can be created based on the data file and applied to the AutoCAD drawing. Multiple queries can be applied on a single drawing.
- faciliCAD enables the user to create Asset Catalog items. These items can then be placed in rooms in the Data Manager or in AutoCAD using the CAD Manger. Once placed, the assets can be linked using an explicit Parent-Child relationship. The links can be displayed graphically in AutoCAD or in a database report.
- Employee records can be created and placed in either the Data Manger or the CAD Manger. Organizational Types can be assigned to employees. Employees can then be placed in rooms using Organizational Type infer rules. The employee Organizational Types can be inferred to the room, or the room Organizational Type can be inferred to the employee, etc.
- faciliCAD Move Manager can be used to create move tickets with multiple moves to be processed on a specified date. Reports can be generated and sent to a distribution list for approval and eventually installation. When the moves are processed, Employee Location, extension, Data Port and Organizational information is automatically updated.

- Create Document Types and Assign Documents to All faciliCAD Objects. Make Documents Date Based for reporting and filtering
- Create and Assign Custom Condition Items to All faciliCAD Objects (Condition Manager) Group Condition Items with User Definable Categories. Assign Dates and Time Intervals to Condition Items for Reporting and Tracking.

Publishing with the Web Manager

- Use the faciliCAD Web Manager to publish your Space, Asset and Employee data in both graphical and non-graphical and viewed on your Intranet or the Internet. Create and apply custom queries both graphically and non-graphically. Print Graphic information (Drawings and Query Results or export non-graphic reports and query results to excel.

Additional Features

- Automated and manual commands to rebuild inferred relationships when assets and employees are moved to other room boundaries.
- Use "Label Styles" to customize the display of Room, Employee, and Asset labels within AutoCAD.
- Combine ChargeBack Assignments with Pro-Rate Values for a flexible solution to Chargeback reports.
- Suites can be used to simplify data entry by combining multiple Rooms into a large area assigned to a single or multiple organizations .
- Use Category values to group multiple rooms with multiple Cost Centers into a functional group.
- Zones can be used to define fire compartments, leased areas, or to divide a large single complex into multiple buildings.

Software Compatibility:

- Microsoft Windows XP Professional, Windows Vista, Windows 7
- AutoCAD 2007-2011, AutoCAD Architectural Desktop 2007, or AutoCAD Architectural 2008-2011, Autodesk MAP 2007-2011
- Microsoft SQL Server 2005 and 2008 and SQL Express 2005 or 2005.

Recommended Hardware:

- Intel Pentium 4 or AMD-K7 Processor, 1.4 GHz or Higher
- 1 GB RAM
- 40 MB free hard disk space
- 1024x768 VGA Vidio Display or Higher
- Internet Connection



faciliCAD is available from
faciliCAD LLC
 920-339-9441
 www.facilicad.com